

Olympic Park Tour

Thursday 26th May 2011

Meet at 9:15am at Pudding Mill Lane

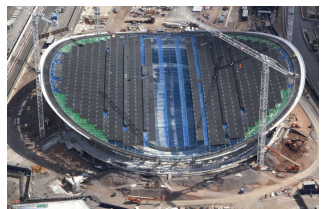
As a result of overwhelming demand for our previous tours of the Olympic Park, we are pleased to be able offer a third opportunity for our members to see at first hand the incredible progress that has been made in the construction of the Park. Come May 2011, there will be just 14 months to go before the start of the London 2012 Olympic Games, so the Park will be truly taking shape.



The tour of the Olympic Park will be by bus, departing from and returning to the visitor access point at Pudding Mill Lane, and will take about 40 minutes. At the end of the tour, we are hoping that a member of the ODA transport planning team will also be able to give us a presentation of the transport strategy for the Olympics. We will confirm this closer to the time.



The event is open to TPS members only and must be pre-booked. We expect demand to be high and, as spaces are strictly limited (25 only), we advise that you book as soon as possible by emailing Pauline.Arundel@ice.org.uk. Preference will be given to those who were unable to make the tour in November 2010.



You will need to bring photo ID with you on the day. On confirmation of your booking we will provide you with the list of acceptable identity documents, together with details of where to meet. You will not need personal protective equipment as we will not be alighting from the bus. Except at the end of the tour, obviously!

If you require any further information about the event, please email Jamie Wheway at wheway@itpworld.net

Please register early as demand for places will be high. This is a members only event. Those intending to come should either email Pauline.Arundel@ice.org.uk or complete the form below and return it to:

**To: Transport Planning Society, 1 Great George Street, London SW1P 3AA.
Tel: 020 7665 2238 Fax: 020 7799 1325**

I/We will attend the event on 4th November 2010

Name(s):

Organisation:

Address:

Tel:E-mail:.....